



# (TWO WIRE) TRANSMITTERS 560/570 SERIES

The 560/570 Series isolated "Two Wire" transmitters are designed for the general-purpose instrumentation market. These transmitters provide a 4-20 or 10-50 MADC output and can be operated on 10 to 32 VDC. The transmitters feature 1500 Volt isolation, 0.2% accuracy and current limiting. J.I.C. enclosures of 16 ga. steel are standard for all models with explosion proof housings optional. The 560/570 Series is a very rugged family of instrumentation transmitters for use in hostile environments.

## "TWO WIRE" ISOLATED TRANSMITTERS

### STANDARD MODELS

- 568000:** J.I.C. A.C. Voltage
- 568002:** NEMA-7/9
- Input: 5 MV/RMS to 600 V/RMS
- Output: 4-20 or 10-50 MADC
- 569000:** J.I.C. A.C. Current
- 569002:** NEMA-7/9
- Input: 0 to 5 Amps A.C.
- Output: 4-20 or 10-50 MADC
- 571000:** J.I.C. Thermocouple
- 571002:** NEMA-7/9
- Input: J,K,T,R,S,E Min. Span 5 MVDC
- Output: 4-20 or 10-50 MADC
- 572000:** D.C. Millivolt
- 572002:** NEMA-7/9
- Input: 5 to 100 MVDC
- Min. Span 5 MVDC
- Output: 4-20 or 10-50 MADC
- 573000:** J.I.C. D.C. Current
- 573002:** NEMA-7/9
- Input: 4-20 or 10-50 MADC
- Output: 4-20 or 10-50 MADC
- 574000:** J.I.C. D.C. Voltage
- 574002:** NEMA-7/9
- Input: 100 MVDC to 1500 VDC
- Output: 4-20 or 10-50 MADC
- 576000:** J.I.C. Slide wire
- 576002:** NEMA-7/9
- Input: 100 to 4000 ohms
- Output: 4-20 or 10-50 MADC
- 577000:** J.I.C. R.T.D.
- 577002:** NEMA-7/9
- Input: 100 ohm Platinum 50 F Min. Span
- Output: 4-20 or 10-50 MADC
- 578000:** J.I.C. Tachometer
- 578002:** NEMA-7/9
- Input: 5Hz Min. 20K Hz Max.
- Output: 4-20 or 10-50 MADC



J.I.C. Enclosure  
Size 4" x 4" x 2 3/4"

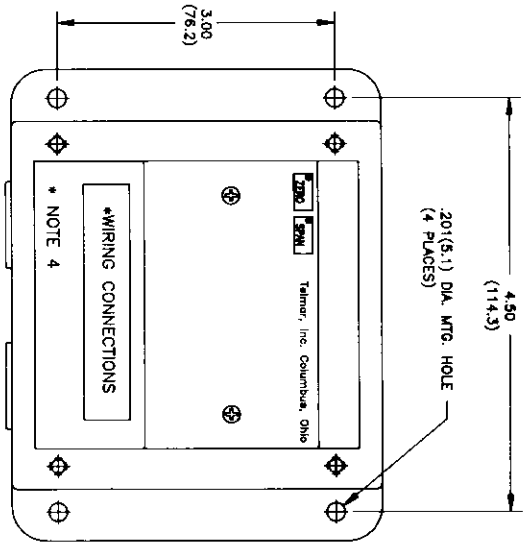
### FEATURES

- Adjustable Zero-Span
- All Steel Housing
- 1/2" Conduit Openings
- Excellent Stability
- Small Size 4" x 4" x 2 3/4"
- RFI Protection

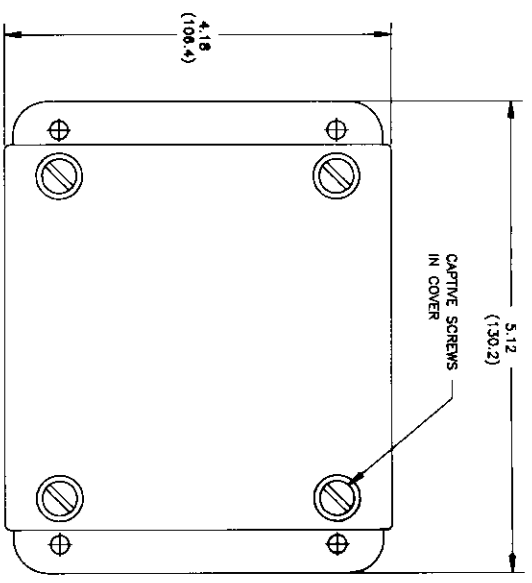
### GENERAL SPECIFICATIONS

- Overall Accuracy:**  
0.2% of Span
- Ambient Temperature:**  
-20 to 140°F
- Isolation:**  
1500 Volts RMS
- Power:**  
10 to 32 Volts D.C.  
24 Volts Nominal
- Loop Resistance:**  
24 Volts D.C.  
4-20 MADC (600 ohms)  
10-50 MADC (250 ohms)
- Transmitter Housing:**  
J.I.C. 16 ga. steel  
Blue Epoxy Painted  
NEMA-7/9 (K-27)  
Copper Free Aluminum  
SAMA 2-ac: 1 %

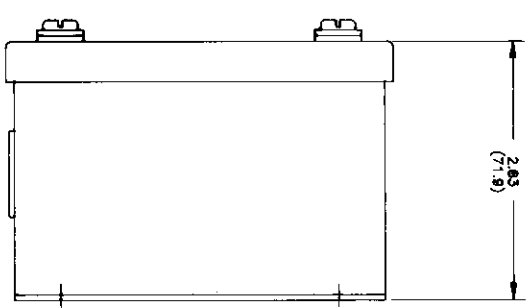
Analylnk Wireless, LLC ❖ 790 Cross Pointe Road ❖ Columbus, OH 43230  
Phone: (614) 755-5091 Fax: (614) 755-5093 Web: [www.analylnk.com](http://www.analylnk.com) & [www.telmarinc.com](http://www.telmarinc.com)



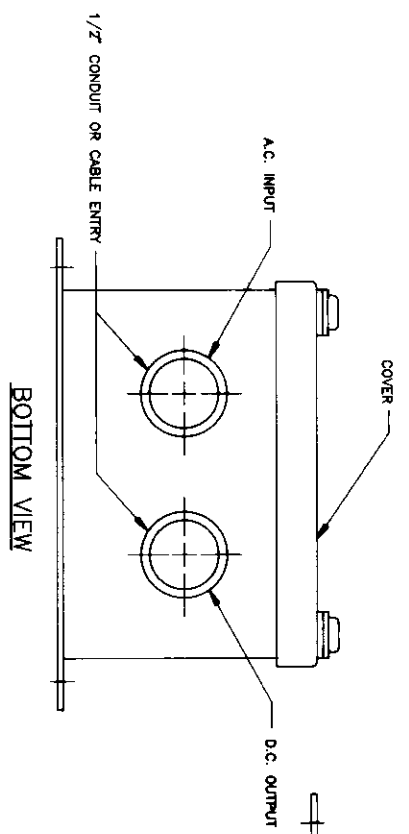
FRONT VIEW  
COVER REMOVED



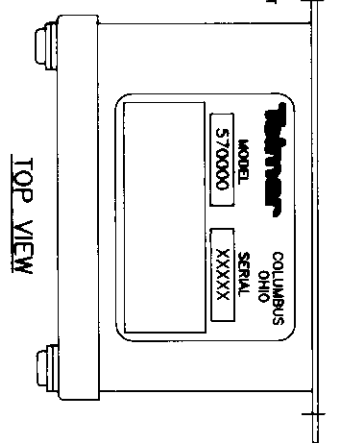
FRONT VIEW



RIGHT SIDE VIEW



BOTTOM VIEW



TOP VIEW

DWG NO.		SD-C-0124-C
REVISIONS		
A	UPDATED	J.E.F. 3-9-82
B	UPDATED	J.E.F. 11-15-82
C	UPDATED	(000) 5-25-89

DWG  
C-SD-C-0124-C

- NOTES:
1. NEMA-4 LIQUID-TIGHT ENCLOSURE, 16 GA. STEEL, BLUE EPOXY FINISH.
  2. WEIGHT INCLUDING INSTRUMENT IS 2.5 LBS.(5.5 KILOGRAMS).
  3. ALL DIMENSIONS SHOWN IN PARENTHESES ARE IN MILLIMETERS.
  4. UNLESS OTHERWISE SPECIFIED, REFER TO SPECIFIC INSTALLATION AND OPERATION MANUAL FOR WIRING CONNECTIONS.

QUANTITY		PART NO.		ITEM	
1		570000		ENCLOSURE	
MACHINE		DATE		APPROVED	
570000		5/24/82		[Signature]	
TITLE		DESCRIPTION		DRG. DWG. ITEM	
TWO WIRE TRANSMITTER		ENCLOSURE		SD-C-0124-C	