

The Telmar 500 Series of Signal Alarms have been designed for general- purpose instrumentation applications. All models are housed in 16ga steel cases featuring a universal mounting base and U.L. approved relays. These units come standard with High, Low or Dual Alarms. All Telmar Signal Alarms are subject to 120 hours burn-in prior to final calibration and shipment

STANDARD MODELS

540 Series Thermocouple

Input: J, K, T, R, S, E, 5MV to 250MV

540121 High Alarm

540111 Low Alarm

540231 High and Low

542 Series D.C. Millivolt

Input: 5 to- 499MVDC

542121 High Alarm

542111 Low Alarm

542231 High and Low

544 Series R.T.D.

Input: Nickel or Platinum

544121 High Alarm

544111 Low Alarm

544231 High and Low

546 Series A.C. Current

Input: 0 to 5 amps A.C.:

546121 High Alarm

546111 Low Alarm

546231 High and Low

548 Series Slide wire

Input: 100 to 4000 ohms

548121 High Alarm

548111 Low Alarm

548231 High and Low

541 Series D.C. Current

Input: 1-5, 4-20, 10-50MADC

541121 High Alarm

541111 Low Alarm

541231 High and Low

543 Series D.C. Voltage

Input: 0.5 to 200 VDC

543121 High Alarm

543111 Low Alarm

543231 High and Low

545 Series A.C. Voltage

Input: 5MV AC to 600VAC

545121 High Alarm

545111 Low Alarm

545231 High and Low

547 Series Tachometer

Input: 50 to 10,000CPS

547121 High Alarm

547111 Low Alarm

547231 High and Low

549 Series Strain Gauge

Input: 4 wire Resistance Bridge

549121 High Alarm

549111 Low Alarm

549231 High and Low Alarm



GENERAL SPECIFICATIONS

Set Point Calibration:
0 to 100% of Span

Relay Dead band:
2.0% of Span

Relay Contact Rating:
5.0 Amps at 120VAC

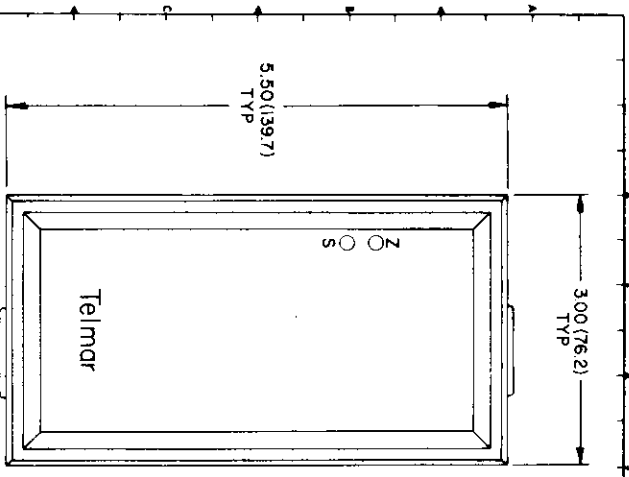
Relay Operation Mode:
Failsafe

Ambient Temperature Range:
0° F to 140° F

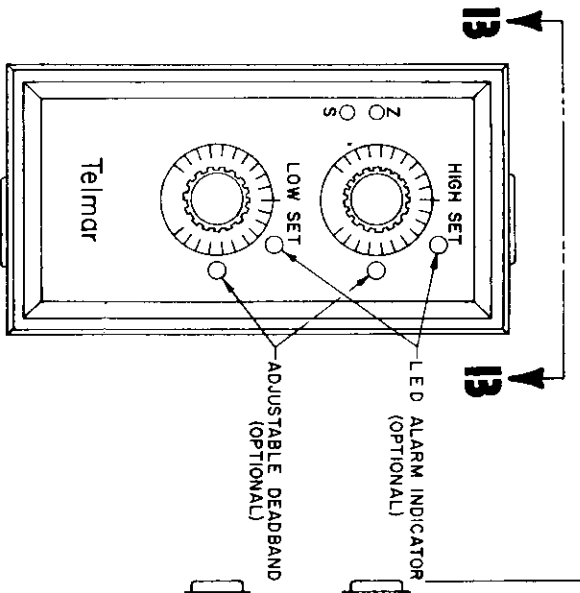
Operating Power:
117/220VAC/50/60Hz

OPTIONS

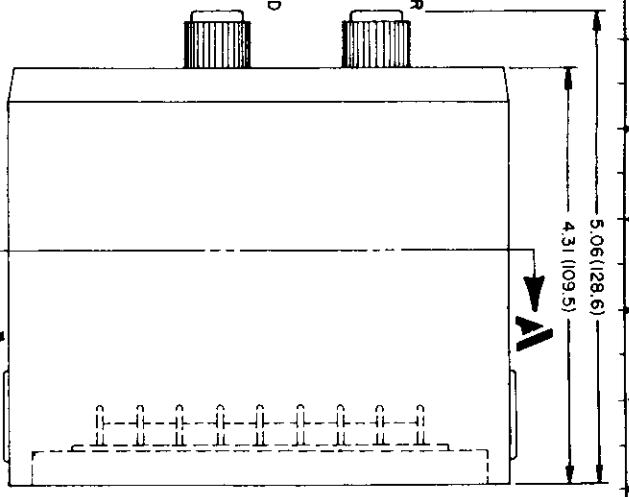
Adjustable Dead band
High/High or low/low Alarms
L.E.D. Relay Indicator
10 Turn Potentiometer-Dials



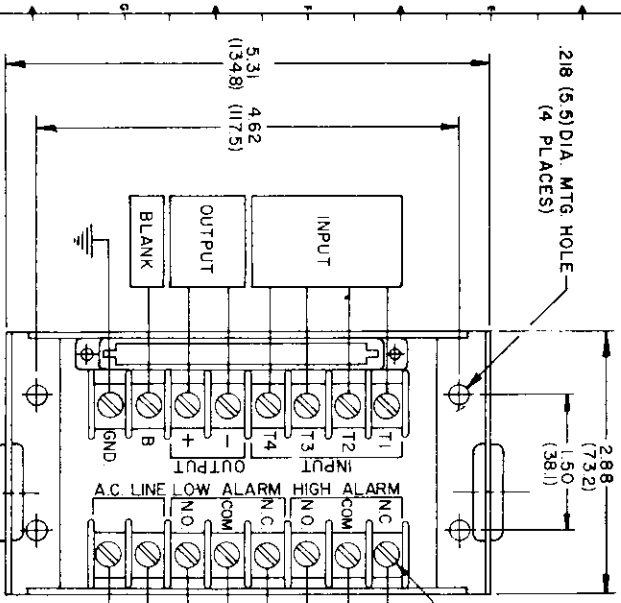
FRONT VIEW
(TRANSMITTER ONLY)



FRONT VIEW WITH ALARMS
(TRANSMITTER WITH ALARMS)

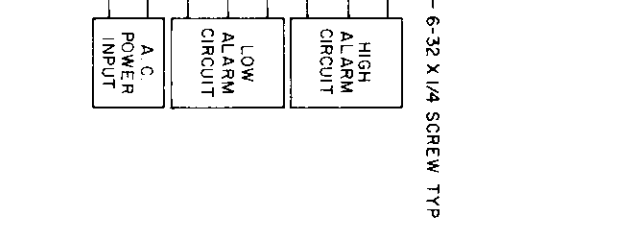


RIGHT SIDE VIEW

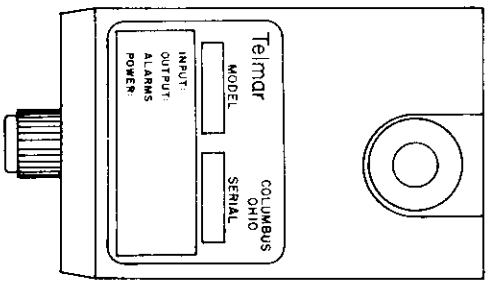


1/2" CONDUIT OR CABLE ENTRY

VIEW A-A



6-32 X 1/4 SCREW TYP



VIEW B-B

- NOTES
1. REFER TO INDIVIDUAL INSTALLATION AND OPERATION INSTRUCTIONS FOR SPECIFIC WIRING DATA.
 2. ALL DIMENSIONS SHOWN IN PARENTHESES ARE IN MILLIMETERS UNLESS OTHERWISE SPECIFIED.
 3. ZERO SPAN AND ALARM CONTROLS ARE FRONT ADJUSTABLE.
 4. ADJUSTABLE DEADBAND AND LED OPTION AVAILABLE ON SIGNAL ALARMS ONLY.

DWG
C-SD-C-0115

QTY	PART NO.	ITEM	DESCRIPTION	DRG/DWG	ITEM
1			Telmar Inc.		
COLUMBUS, OHIO					
TITLE "500 SERIES"					
FOR MECHANICAL AND ELECTRICAL INSTALLATION DATA					
NEXT ASSY DWG NO					
DATE					
DRAWN / E.F. DATE 4-30-79					
CHECKED / R.H. DATE					
APPROVED / DATE					

DWG NO
SD-C-0115

REVISIONS

1