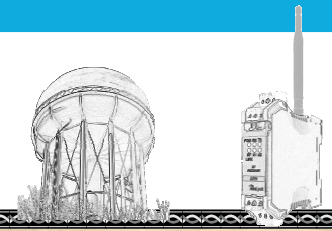


Wireless Tank Level Monitor and Pump Control with Pump Status Notification

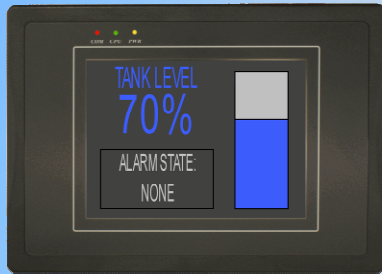


Wireless Tank Monitor

Utilizing Analynk's Model A753 4-20mA transmitter, tank level can be sent to the water plant control room. The control room can send pump on/off information via the A750 with expansion module to turn on and off multiple water pumps. The on/off status of each pump is returned back to the control ensuring the system is operating properly.

An HMI can be added to the system for a visual indication of tank level and/or pump status.

Several options are available for powering the system including +24Vdc, 120 Vac, and solar. Enclosure options include NEMA 4.



Distributed by:
Analynk Wireless, LLC
(614) 755-5091 Phone
(614) 755- 5093 Fax
(info@analynk.com)

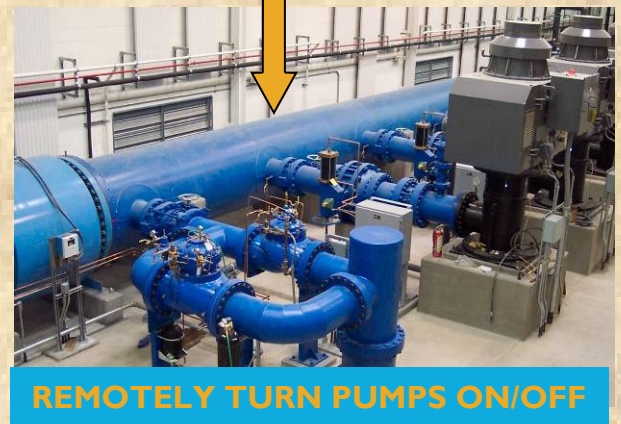
A753



A750-MOD / A3300



A750/A3300



Your Link to Wireless Instruments!

www.analynk.com

Analynk
Wireless, LLC

A753 DIN Rail Mount RF Transmitter: 1Watt, 900MHz (2.4GHz, 63mW optional) with one 4-20mA input and two discrete inputs.

A750 DIN Rail Mount RF Receiver: 1Watt, 900MHz (2.4GHz, 63mW optional) with one 4-20mA output and two discrete outputs.

A750-MOD DIN Rail Mount Receiver: 1Watt, 900 MHz (2.4GHz, 63mW optional) with RS232/485 output.

A0033 Expansion Module: three discrete inputs and three discrete outputs.

HMI Touch Screen for viewing and changing input/output parameters. Screen can display tank levels, switch status, alarms and perform data logging. HMI is NEMA 4 rated.

Note: All transmitters, receivers and expansion modules include AnaBus. AnaBus provides power and local communication between transmitters / receivers and modules.

Options

Contact the factory, your local distributor or visit us on the web www.analynk.com for a complete list of options.

