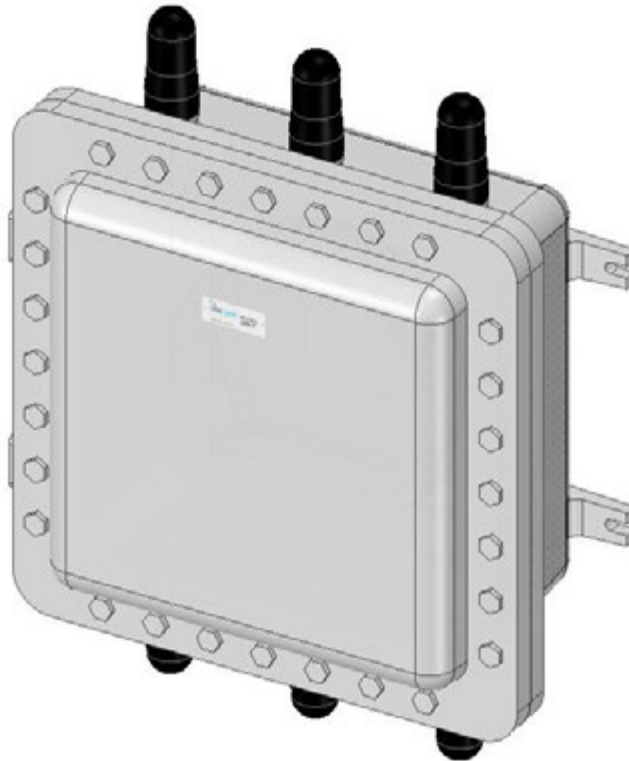


## **AP628 DUAL-BAND HAZARDOUS AREA ACCESS POINT ENCLOSURE FOR ARUBA AP-574**



---

The AP628 is designed to house the Aruba AP-574 dual band access point for use in hazardous areas. The enclosure, all hardware, and antennas are rated for Class I, Division 1, groups C & D Hazardous Locations. All hardware, mounting plate, antennas and RF cables are provided to make installation of the access point quick and easy. The enclosure utilizes our proprietary explosion proof CTX series of antennas, six dual band 2.4GHz/5GHz are included.

**Ratings:**

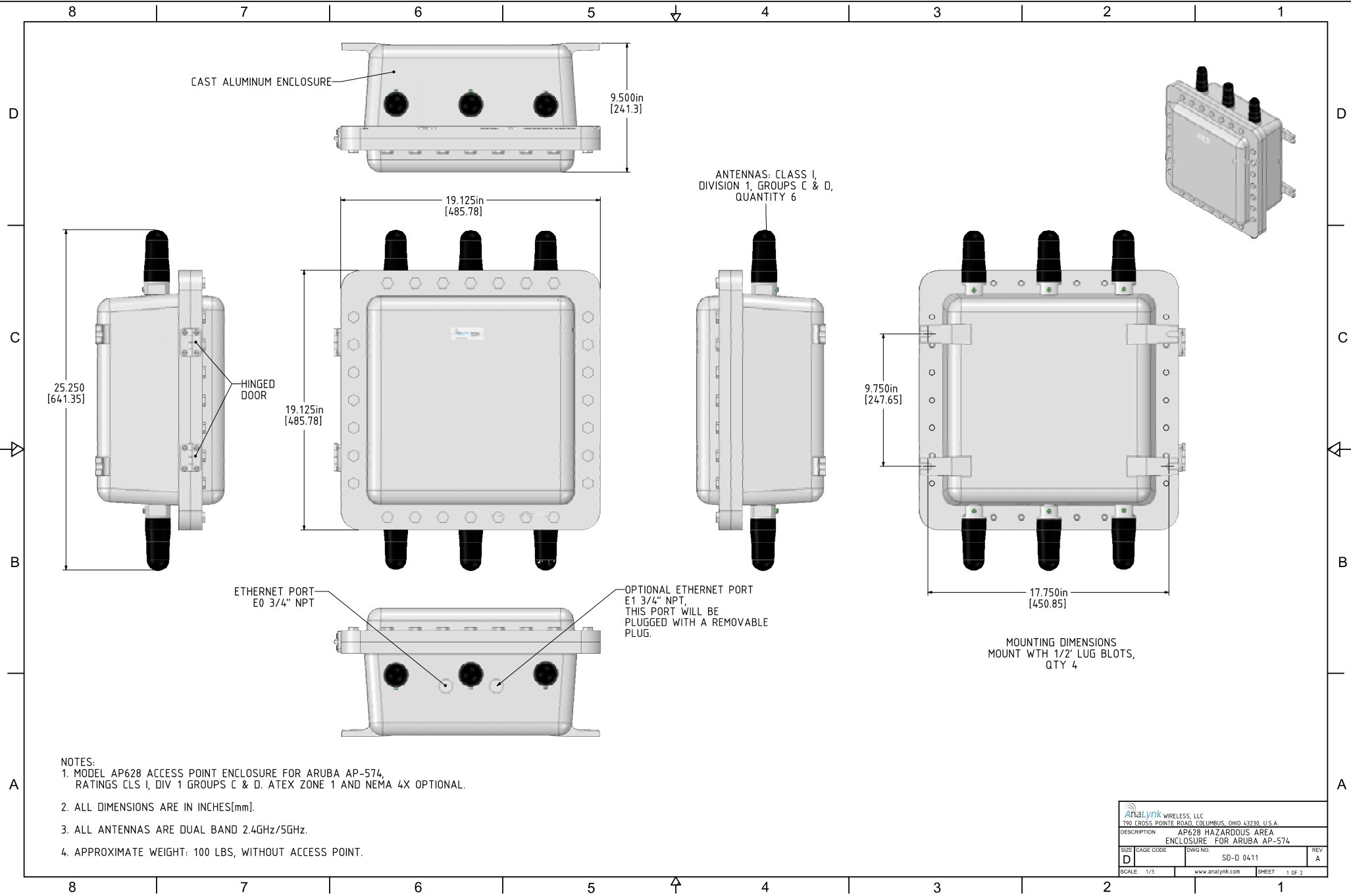
Class I, Division 1, Groups, C & D

**Applications:**

- Pharmaceuticals
- Oil refineries
- Oil & Gas Platforms
- Chemical Plants

**Ordering information:**

AP628  
AP628-N4 (NEMA 4 option)  
AP628-ATEX (ATEX Zone 1 option)



- NOTES:
1. MODEL AP628 ACCESS POINT ENCLOSURE FOR ARUBA AP-574, RATINGS CLS I, DIV 1 GROUPS C & D. ATEX ZONE 1 AND NEMA 4X OPTIONAL.
  2. ALL DIMENSIONS ARE IN INCHES[mm].
  3. ALL ANTENNAS ARE DUAL BAND 2.4GHz/5GHz.
  4. APPROXIMATE WEIGHT: 100 LBS, WITHOUT ACCESS POINT.

ANALYNK WIRELESS, LLC 790 CROSS POINTE ROAD, COLUMBUS, OHIO 43230, U.S.A.			
DESCRIPTION: AP628 HAZARDOUS AREA ENCLOSURE FOR ARUBA AP-574			
SIZE: D	CAGE CODE:	DWG. NO.: SD-D 0411	REV: A
SCALE: 1/3	www.analynk.com		SHEET: 1 OF 2