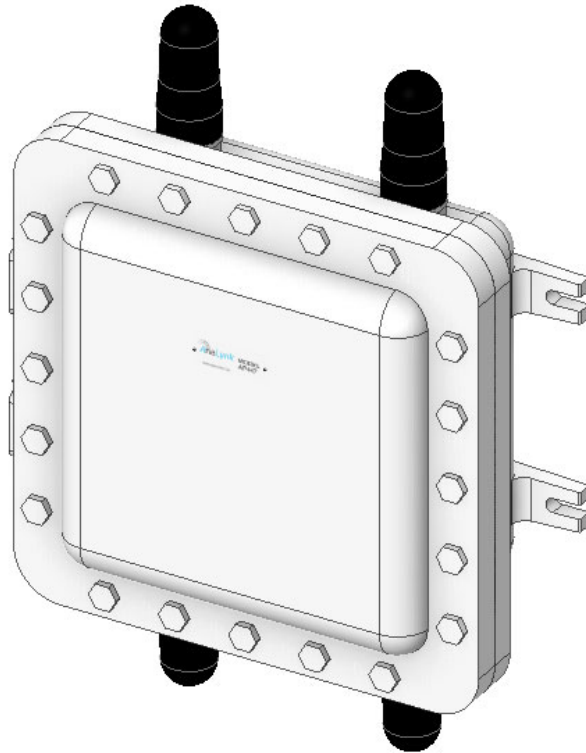

AP447 DUAL-BAND HAZARDOUS AREA ACCESS POINT ENCLOSURE FOR CISCO IW9165E



The AP447 enclosure assembly is designed to house the Cisco IW9165E access point for use in hazardous areas. The enclosure, along with all hardware and antennas, are rated for Class I, Division 1, Groups C & D hazardous locations. Optionally, the enclosure can have a NEMA 4X or ATEX Zone 1, IIB rating. All necessary hardware, including the mounting plate, antennas, and RF cables, are provided to ensure quick and easy installation of the access point. The enclosure includes four of our proprietary explosion-proof 2.4GHz/5GHz CTX series antennas. Contact the factory if Wi-Fi 6E (6 Hz) or GNSS is required.

Applications:

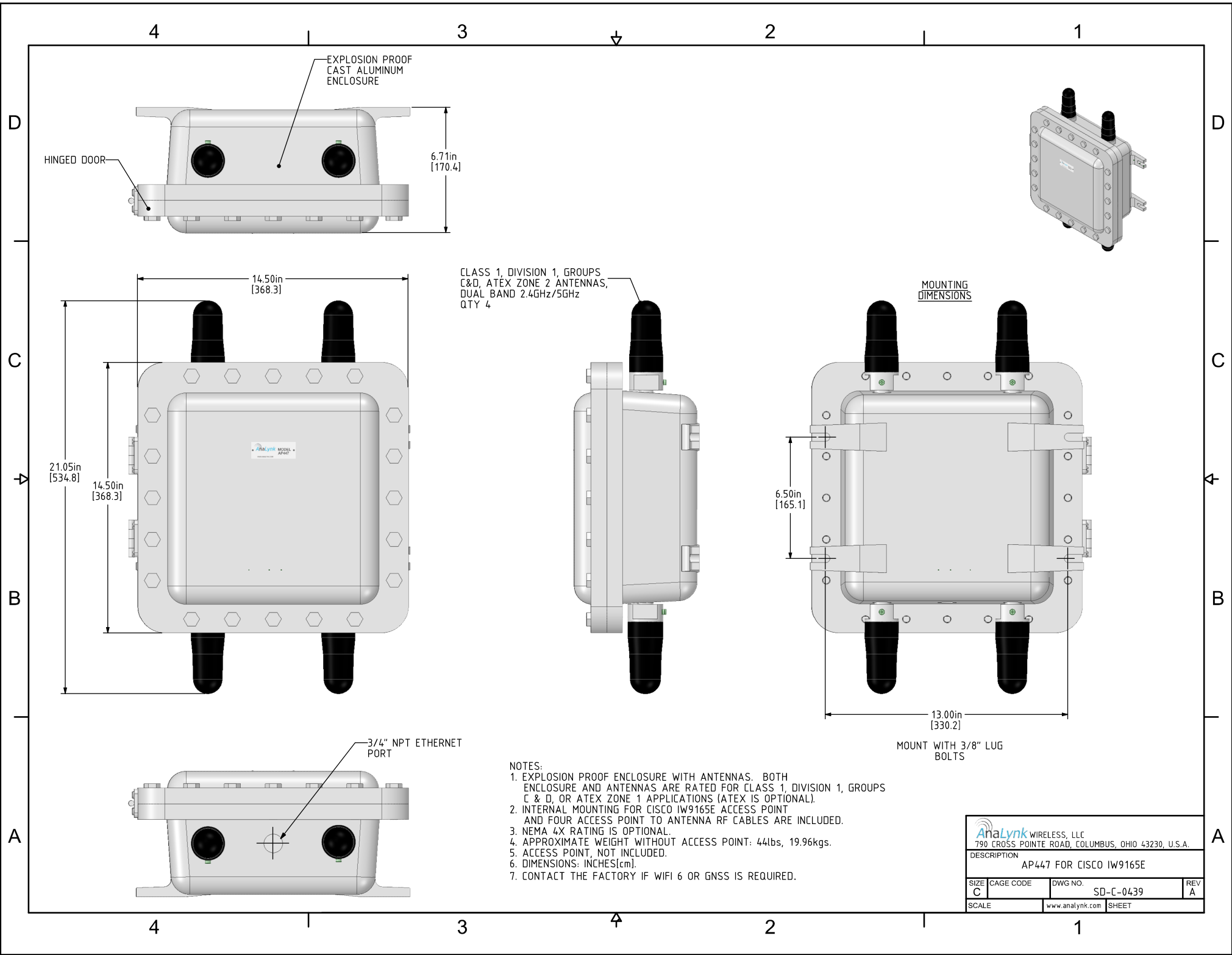
- Pharmaceuticals
- Oil refineries
- Oil & Gas Platforms
- Chemical Plants

Ordering information:

AP447 Class I, Div 1,
Groups, C & D

AP447-N4 (NEMA 4 option),
Groups C & D

AP447-ATEX (ATEX option),



CLASS 1, DIVISION 1, GROUPS
C&D, ATEX ZONE 2 ANTENNAS,
DUAL BAND 2.4GHz/5GHz
QTY 4

MOUNTING
DIMENSIONS

MOUNT WITH 3/8" LUG
BOLTS

- NOTES:
- EXPLOSION PROOF ENCLOSURE WITH ANTENNAS. BOTH ENCLOSURE AND ANTENNAS ARE RATED FOR CLASS 1, DIVISION 1, GROUPS C & D, OR ATEX ZONE 1 APPLICATIONS (ATEX IS OPTIONAL).
 - INTERNAL MOUNTING FOR CISCO IW9165E ACCESS POINT AND FOUR ACCESS POINT TO ANTENNA RF CABLES ARE INCLUDED.
 - NEMA 4X RATING IS OPTIONAL.
 - APPROXIMATE WEIGHT WITHOUT ACCESS POINT: 44lbs, 19.96kgs.
 - ACCESS POINT, NOT INCLUDED.
 - DIMENSIONS: INCHES[cm].
 - CONTACT THE FACTORY IF WIFI 6 OR GNSS IS REQUIRED.

AnaLynk WIRELESS, LLC 790 CROSS POINTE ROAD, COLUMBUS, OHIO 43230, U.S.A.			
DESCRIPTION			
AP447 FOR CISCO IW9165E			
SIZE	CAGE CODE	DWG NO.	REV
C		SD-C-0439	A
SCALE	www.analynk.com	SHEET	